

**The Bishop of Llandaff**  
Church-in-Wales High School

# FROM THE HEADTEACHER



“The Bishop of Llandaff High School is a very good Church in Wales school . . . The quality of worship is exemplary.”

**Denominational Inspector**

I am proud to welcome you to the Bishop of Llandaff High School.

We aim to foster the intellectual, social, creative, physical, moral and spiritual development of all our pupils.

We see each child as a unique person with a God-given individual identity.

We strive to help children learn to live together in harmony and to co-operate in working for the common good, not just for themselves.

We recognise that only by giving due importance to moral and spiritual development can we help the child grow into a mature adult.

We are supported by our daily act of worship and the work of the parish clergy who visit the school for parish prayers on a weekly basis.

Our curriculum and pastoral arrangements are not an end in themselves. They are a means to develop our pupils into whole, happy and well-educated people.

This is a task that involves co-operation between the pupil, school, home, church and community. Each of us has a vital part to play.

*C.G. Hollowood*

The Reverend C.G.Hollowood, B.Ed., M.A.  
Head Teacher

# WHAT DOES BEING A CHURCH SCHOOL MEAN?



The Bishop of Llandaff High School is a mixed 11-18 Church in Wales Comprehensive School. We serve the city and surrounding area of Cardiff including the Vale of Glamorgan and as far as Pontypridd in the North and Bridgend in the West.

The school was founded forty years ago as a Church School. We ensure that worship is at the centre of school life and Religious Education is a key component of our curriculum.

We are privileged to be able to visit the Cathedral termly for our School Eucharists. However, being a Church School means more than that. It has a noticeable effect on the quality of relationships in the school. Visitors frequently comment on the calm and happy atmosphere. It also means that we set our pupils the highest standards in all aspects of school life and expect them to achieve their best irrespective of their background or ability.

Although the Church in Wales, through the Governors, controls the character of the school, children of parents of all Christian denominations who support our ethos are welcome to attend the school.

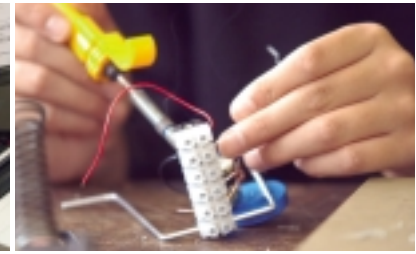
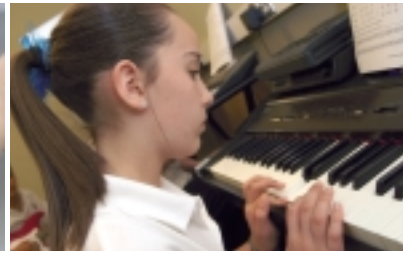
We believe that a high achieving school surrounded by faith and love is the best and right basis for learning and growing.

“There’s a really good atmosphere for worship in the school . . . It’s easy to make a contribution.”

**Two Year 13 Students**



# HOW DO WE CHALLENGE AND SUPPORT OUR LEARNERS?

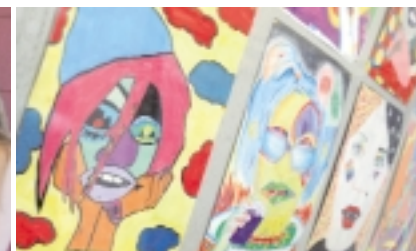


“The school is adding value to pupils’ standards across the ability range.”

**Estyn Inspector**

- ▶ Our school has pupils of various abilities. We strive to ensure that all achieve their potential by using innovative teaching techniques to engage our learners, such as the development of thinking and learning skills.
- ▶ Each individual has his or her preferred way of learning. We recognise this and aim to give our pupils every opportunity to develop their learning through a variety of teaching strategies. For instance, we know that some pupils learn more effectively in a visual way and lessons are then prepared with that focus.
- ▶ Pupils are regularly encouraged to review their own work and progress as well as having their work assessed by their teachers. Realising their own strengths and recognising the areas in which they need to develop is central to success in learning, and gives them ambitious targets for improvement.
- ▶ Pupils with Special Educational Needs are supported and their progress monitored to provide them with opportunities for further improvement. The school has Learning Assistants to help pupils with their work in the classroom.
- ▶ Some pupils are identified as gifted and talented and a group of staff meets regularly to explore issues related to our more able pupils. We are committed to provide challenging and stimulating opportunities for their development.
- ▶ We work closely with other schools, in particular our partner primaries, to ensure a smooth transition from Key Stage 2 to 3.
- ▶ The school has a group of staff who meet regularly to develop innovative teaching techniques which will stimulate learners and help them achieve the highest possible standards, such as using an interactive whiteboard as a way of engaging pupils’ interest and demonstrating the potential of information technology for improving learning.
- ▶ We constantly review our broad and balanced curriculum to ensure that the curriculum is suitable for the needs of young people in the 21st century, for instance the introduction of GCSE Information Technology for each pupil in Years 10 and 11.

## WHAT IS OUR SIXTH FORM LIKE?



In the Sixth Form, Years 12 and 13, we try to develop further our students' interests and abilities, and to equip them with the skills needed for future success.

Students work hard and their progress is closely tracked and supported by teachers, form tutors, year tutors and the Assistant Headteacher. Students are challenged to set targets for their own performance and are encouraged to plan for their future after the Sixth Form. They take part in a whole range of extra-curricular activities such as a cabaret, fashion shows and school productions. They raise funds for charity and involve themselves in leading worship in the school, and have special Sixth Form Eucharists both in school and in Llandaff Cathedral.

Our students mature in an atmosphere which encourages independence and self-reliance, whilst emphasising the importance of support within a community.

“Of course, there's been the fun and friends, what with the fund-raising and fashion shows, but the sixth form has also been about furthering my education, about fulfilling goals, widening my knowledge and making me wiser – able to appreciate a new perspective.”

**Year 13 Student**



# HOW ARE INDIVIDUAL PUPILS CARED FOR?



“I’ve been to other schools in the last year. Bishop doesn’t feel as big as the others. It’s friendly.”

**Year 8 Pupil**

“A friendly, close-knit and caring community.”

**Estyn Inspector**

“The atmosphere is relaxed but respectful.”

**Estyn Inspector**

“There’s a friendly environment, a strong sense of family.”

**Year 13 Student**

“I really enjoyed being on School Council in Year 7. It was good being involved in discussions and making decisions on things like lockers.”

**Year 8 Pupil**

**The Bishop of Llandaff**  
Church-in-Wales High School

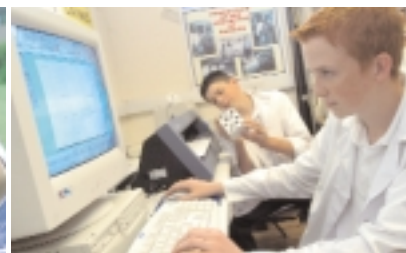
Each pupil, on entering the school, becomes a member of a form group. The form group provides a sense of belonging and helps pupils feel secure. The Form Tutor offers help and advice along with a Year Tutor for each year group and an Assistant Headteacher responsible for each Key Stage. We aim to work closely with parents to support our pupils.

We expect and achieve high standards of behaviour based on a mutual respect for pupils, staff and our school community as a whole. We aim for all to develop and achieve their full potential in a harmonious, safe and secure learning environment.

## Our Code of Conduct

- We show respect to staff and students
- We support the Christian ethos of the school
- We take full responsibility for our learning
- We behave in a responsible manner
- We follow instructions
- We work to the best of our ability
- We help others to work





## Our Rewards System

We have a rewards system to celebrate achievement, including:

- Verbal and written praise
- Telephone calls and letters home
- Merit stickers for exceptional work or pupil effort
- Certificates
- Presentations
- Headteacher's Commendations

## Our School Council

The School Council gives pupils the opportunity to express their views about school life and to give their opinions about decisions to be made. One boy and girl from each form sits on the Year Council, and the Year Council then elects two representatives for the School Council.

## Our House System

Each pupil is assigned to one of four Houses:

- St David
- St John
- St Paul
- St Teilo

The houses create groups within the school where pupils of all ages can work together with staff in a wide variety of extra-curricular activities, in particular Inter-house games and the Eisteddfod. The Eisteddfod is the main Welsh cultural event in school and allows pupils to present their musical, dramatic and creative talents.

*"Mae diwrnod yr Eisteddfod yn hwyl bob tro. Mae'n wych I weld ffrindiau yn canu, actio ac adrodd."*

*"Eisteddfod day is great every time. It's great to see friends singing, acting and reciting."*

*"Mae'r Eisteddfod yn bwysig achos rydyn ni'n byw yng Nghymru – mae'n rhan pwysig o fywyd a diwylliant Y Cymry."*

*"The Eisteddfod is important because we live in Wales – it's an important part of the life and culture of the Welsh people."*

*"Mae tât St David, St John, St Paul a St Teilo yn cystadlu bob blwyddyn yn yr Eisteddfod – ond pam mae St Teilo yn ennill bron bob blwyddyn?"*

*"The houses of St David, St John, St Paul and St Teilo compete every year in the Eisteddfod – but why does St Teilo win almost every year?"*

**from pupils  
studying Welsh**

# WHICH EXTRA-CURRICULAR ACTIVITIES DO WE OFFER PUPILS?



“The social life is really good here.”

**Year 13 Student**

Many pupils gain as much success outside the curriculum as they do within it. We place a high degree of value upon the range of extra-curricular activities that run throughout the academic year.

## Sport

Pupils play a very wide range of sports, including:

- ▶ Athletics
- ▶ Badminton
- ▶ Cricket
- ▶ Dance
- ▶ Fencing
- ▶ Football
- ▶ Gymnastics
- ▶ Hockey
- ▶ Netball
- ▶ Rock Climbing
- ▶ Rugby
- ▶ Tennis
- ▶ Trampolining
- ▶ Swimming
- ▶ Weight Training

Our annual Sports Day and House Sports stimulate loyalties and high competition. The school teams frequently meet with success at tournaments. Many pupils represent the county and some have gone on to compete at international level.





## Duke of Edinburgh Award Scheme

This scheme helps pupils build self-confidence and make decisions for themselves. They broaden their educational experiences through a range of valuable and challenging situations. Each year, about 50 pupils gain their Bronze, 30 their Silver and 20 their Gold Awards. Recent expeditions include Dartmoor, the Brecon Beacons and Ogmore Vale.

## Music and Drama

Our school has:

- ▶ A Senior Choir
- ▶ A Junior Choir
- ▶ A Wind Band
- ▶ An Orchestra

Annual concerts and carol services are held in Llandaff Cathedral. In addition to timetabled music lessons, peripatetic teachers come to the school to give individual lessons, for instance to singers, flautists and drum players.

Each year we have Drama productions. In past years these have included 'Grease', 'South Pacific' and pantomimes where pupils express their many talents.

## Other Extra-Curricular Activities

A whole host of clubs and societies meet at lunchtime and after school.

Activities include:

- |                   |                        |                    |
|-------------------|------------------------|--------------------|
| ▶ Amnesty         | ▶ Geography            | ▶ Science          |
| ▶ Art             | ▶ Kite Flying          | ▶ Special support  |
| ▶ Chess           | ▶ Psychology/Sociology | “Thumbs Up”        |
| ▶ Christian Union | ▶ Mathematics          | ▶ Textiles         |
| ▶ Debating        | ▶ Music Technology     | ▶ TV/Media         |
| ▶ Ecology         | ▶ Reading              | ▶ Youth Parliament |

Visits are organised during the year, such as:

- ▶ Ski Trip to Austria
- ▶ Outdoor Pursuits Trip to Storey Arms
- ▶ Art Trip to France
- ▶ Drama/Art Trip to New York
- ▶ World Challenge Expedition to Peru

“The PE staff have been so positive they’ve made me realise anything is possible.”

**Cardiff Schools Rugby Cap**

“It’s been hard work, but great fun. As well as deepening friendships it’s taught me independence, determination and commitment. It’s given me a real sense of achievement.”

**Year 11 Pupil**

“My confidence has improved enormously. It’s been a real character-building experience. As for the New York trip . . . enough said.”

**Year 13 Drama Student**

“I’ve been on a school trip every year for the last six years and they’ve all been really good.”

**Year 13 Student**

# WHAT HAVE OUR PUPILS ACHIEVED?



“My parents wanted me to come here because the school gets excellent results at A level and GCSE.”

**Year 7 Pupil**

## Recent Results

### KS3 Results - SATs % of pupils gaining level 5 or above

	2001	2002	2003	2004
English	80	86	85	79
Mathematics	82	84	92	83
Science	84	89	91	89

### KS4 Results - % of pupils gaining

	2001	2002	2003	2004
5 A* - Cs	77	75	85	80
5 A* - Gs	95	95	98	99

### KS5 A Level Results - % of A level Grades

	2001	2002	2003	2004
A/B Grades	51	60	60	51
A/E Grades	97	99	98	99



The Bishop of Llandaff  
Church-in-Wales High School



# The Bishop of Llandaff Church-in-Wales High School

Rookwood Close, Llandaff, Cardiff CF5 2NR  
Telephone: 029 2056 2485 Fax: 029 2057 8862  
email: [bishopofllandaffhigh@cardiff.gov.uk](mailto:bishopofllandaffhigh@cardiff.gov.uk)

Head Teacher:  
The Reverend C.G.Hollowood, B.Ed., M.A.

Cover designed by pupils of the school

